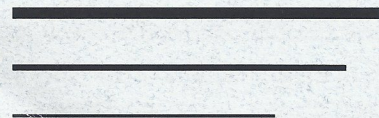
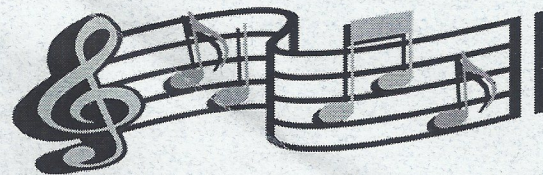


# CON BRIO



*Oregon Music Teachers' Association, Inc.*  
**Eugene District**

Affiliated with the Music Teachers' National Association, Inc.



Opus 195

October 2008

page 1

## *Festival of Popular Music*

Sunday, October 19, 2008  
1:00 to 5:00 PM

United Lutheran Church  
2230 Washington St., Eugene  
(corner of West 22nd & Washington St.)

For more information, please contact  
Soria Phillips-Meadow at 484-7090 or  
email [eands@rio.com](mailto:eands@rio.com).

*Soria Phillips-Meadow*

Festival of Popular Music Chair

## *Clavier Subscriptions*

Those who are continuing their CLAVIER subscriptions should send in their renewals individually. The CLAVIER people said they will honor the \$13 renewal rate since there is no notice of an increase of price. (Piano Explorer is now \$5 per 5 or more copies.) It is a good idea to include the fact that you are on the OMTA group subscription.

I always send a list of all OMTA subscribers with the final payment of new subscriptions. I will be sending that in at the end of October, so those who wish to start the magazine should give me their checks for \$13 made out to CLAVIER by that time. I will be at the October meeting, or you can mail me the check at 860 E. 43rd Ave., Eugene OR 97405. I will add you to the list that I send in. Please note that the CLAVIER subscription year for new and continuing subscriptions begins with the December issue.

*Jean Wilson*

Clavier Subscriptions Chair

## *An Evening of Original Solo Piano Music featuring NEIL PATTON*

Recording artists, pianists and composers, our own Neil Patton (Eugene), Rebecca Oswald (Eugene), and Louis Landon (Chestnut Ridge, NY) are joining forces to present an evening of original solo piano music. The evening will feature a rotating program mingling the music of each performer, culminating in a round-robin jam session at one piano! This will be Louis Landon's debut performance in Eugene. Rebecca Oswald was a featured composer in the 2008 Oregon Bach Festival (debuting her "symphonic biography" of Bill Bowerman, *Man of Oregon*.)

This concert will take place on Tuesday, October 14th, 7:00 PM at United Lutheran Church (2230 Washington St., Eugene). Tickets are \$15 / \$10 for students and seniors, and will be available at the door or online at <http://www.brownpapertickets.com/event/42702>. Tickets can also be ordered by phone at 1-800-838-3006.

This is a wonderful opportunity to introduce our students to modern piano music and popular improvisation in an intimate setting!

## *October Meeting*

Monday, October 13, 2008

*Official Greetings/Ideas for Studio Management*

Susan Todd, OMTA President, Portland



Place: Home of Christy Matheson

1890 Lorane Highway, Eugene

## Treasurer's Report

Checking Account balance on 09/01/2008: \$1,219.03

### EXPENSES

September 1 - October 1, 2008

DATE	DESCRIPTION	AMOUNT
09/01/08	2008-2009 Yearbooks	352.17
09/04/08	September Con Brio & Directory	73.50
09/10/08	Qwest	32.89
09/12/08	PEAK Internet	19.90
09/12/08	Yearbook expenses	19.48
09/16/08	Website upgrades	150.00
09/14/08	PEAK Internet-domain registration	25.00
	<b>TOTAL</b>	<b>\$ 672.94</b>

### INCOME

September 1 - October 1, 2008

DESCRIPTION	AMOUNT
DUES	51.00
Refund from Yearbook printing	158.67
Scholarship fund (restricted)	400.00
<b>TOTAL</b>	<b>\$ 609.67</b>

Checking Account balance on 10/01/2008: \$ 1,155.76

### Attention Event Chairs:

To request reimbursement for expenses, please send your receipts along with the **OMTA Billing Form**.

If you are submitting student recital fees, fundraising funds, or income of any kind, please use the **OMTA Remittance Form**. Both of these forms can be found at the OMTA website.

If you require direct payment for expenses, you may also use the **OMTA Billing Form**. A check will be sent directly to the business or organization you have indicated on the form. By using this option, you do not need to pay expenses from your personal or business account and wait for reimbursement.

Respectfully submitted,

*Wyatt L. Burger*

Eugene District Treasurer



## Con Brio

October 2008

*Con Brio* is the newsletter of the Eugene Chapter of OMTA, published and distributed monthly, except July and August.

President: Carolyn McHan      Corresponding Sec: Sarah Burch  
 Vice-President: Virginia Buhn      Recording Sec: Neil Patton  
 Treasurer: Wyatt Burger      Past President: Claire Wachter

All materials for publication are due on the Saturday preceding the first Monday of each month.

*Con Brio* is mailed to all members on the Wednesday prior to the monthly meeting.

Wyatt L. Burger, editor  
 e-mail: [westlanepiano@cvcable.com](mailto:westlanepiano@cvcable.com)

## Membership

I would like to welcome the following new members to the Eugene District:

DAVID CRAGUN      PIANO  
 941 HATTON AVE.  
 EUGENE, OR 97404  
 653-9704      DAC6000@GMAIL.COM

MARCEE LONG      VOICE/BEG. PIANO  
 2202 AVENGALE  
 EUGENE, OR 97408  
 345-0084 OR 517-0516  
 MAARCEELONG@AOL.COM

*Delores Tiktin*

Membership Chair

## Syllabus

The deadline for the Fall Syllabus forms and fees is October 13, 2008. You can mail them at 1142 Brookside Drive, Eugene, OR 97405 or give them to me at our October meeting on October 13. All forms are posted on State website under Syllabus "teacher forms." Please don't send another time request; you did that already. Fall Syllabus is November 15-16.

*Lucy Clevenger*

District Syllabus Chair

## ***Recording Secretary's Report***

### **Minutes of the September 8, 2008 District Meeting**

**Meeting called to order at 9:30 AM by President Carolyn McHan.**

No **reading of the minutes** as our last meeting was a potluck in June at Claire and Dean's.

**Treasurer's Report** (available in September *Con Brio*.)

#### **Announcements:**

New member, Judith Powell, was introduced by Delores Tiktin, Membership Chair, along with potential new members Marcee Long, Lindsay Magnuson, Hsiao-Hsiang Chen, Mary Connor & Bethany Foster.

Fern McArthur, State President Elect, reminded us that the State Conference will be in Eugene, at the U of O this Summer (July 31-Aug 2). Claire and Fern are finding presenters and performers. Volunteers are needed.

Esther Megargel has been named OMTA Composer of the Year!

Jane Lunstrum is now Jane Young! (Congratulations!)

Free performance of the Faure Requiem Oct. 12, a gift to the community from the family of the late Dr. George Caire. Tickets available at the Hult Center ticket office.

Free ESO Conductor Audition Concerts, 9/5, 9/12 & 9/25.

Budget committee is finalizing their report. Great new ideas!

#### **District Committee Reports**

**YEARBOOK ADVERTISING** - Linda Plant  
Brought in \$350 to pay for Yearbook as result of current advertisers: Lawsons, Buy & Sell Center, Gracewinds Music, Sherman Clay/Moe's Pianos, U of O and a trade with Arts Umbrella.

**CLAVIER MAGAZINE** - Jean Wilson  
Renewal fees are to be paid direct to Clavier. Piano Explorer has gone up \$1.00.

**MEETINGS** - Virginia Buhn  
Still need refreshments hostesses for meetings

**DEVELOPMENT** - Carol White  
\$500 pledged from Chambers Foundation for 2008-2009.  
\$1000 was brought in by end of last year.

**MENTOR COORDINATOR** - Linda Spangler  
She has information available for new members.

**PUBLIC RELATIONS** - Janie Kaminski  
Gave thanks to Virginia Buhn, our Register Guard liaison.  
Reported that Hsiao-Hsiang Chen has volunteered to help in

the TV/Radio. Flyers are available to give to schools. We are trading ad space in programs and newsletters with Arts Umbrella. She has given our promotional flyers to Home Source and Light Home School.

**REFERRAL** - Jane Young  
She makes teacher referrals by style, geography, etc.

**YEARBOOK** - Nancy Harris  
\$358.20 quoted price for printing costs at Kinkos, an increase from last year. Nancy discovered a printing error for which Kinkos subtracted \$164. Yearbooks will be brought to first two monthly meetings and will also be available at Dolores Tiktin's home. The remainder will be mailed out after the October meeting.

#### **Student Activities**

**PROGRAMS** - Wyatt Burger  
All programs will be produced by Wyatt. See article in September *Con Brio*.

#### **DECORATIONS**

Janie Kaminiski has made it possible to borrow flora pieces from Westside Baptist Church.

**POP FESTIVAL** - Soria Phillips-Meadow  
United Lutheran, Oct. 3 deadline. All levels welcome.

**ENSEMBLE FESTIVAL** - Geneviève Mason  
Nov. 2, Room 163, U of O School of Music. Deadline is Oct. 15. Change in competitive: K-5 can compete, 5 minute limit. Other students the same as before. Adjudicator is Olga Aynvarg, a doctoral student at the U of O. Saving \$—only available at 1:30. Room rented for 4 hours. Do we want to rent 1 - 5, beginning at 1:30, or 2 - 6? Consensus: 1 - 5, starting at 1:30. Discussion re: one adjudicator & re: later festival, with State participation the following Fall (a la Portland district).

**FALL SYLLABUS** - Lucy Clevenger  
Deadline for time request is September 26.  
Dates in Yearbook are incorrect. Should be Nov. 15-16.

**BARNES & NOBLE FUNDRAISER** - Mary Ellen Yost  
Dec. 7th. More slots can be added if necessary.  
Change Yearbook deadline date to October 1.  
Educator discount available to private teachers now!  
Publicity: smaller posters for distribution by members.  
Newspaper publicity. Raised \$915.17 (net) last year.

#### **HOLIDAY & SPRING RECITALS**

Marti Csonka & Sarah Burch

Two recitals: Dec. 14 @ United Lutheran; Spring: May 3 @ Wildish. \$7 fee. Level 2 and up. Deadlines Nov. 29 & April 18.

*continued on page 4*

Minutes...continued from page 3

#### JR. BACH FESTIVAL

Christy Matheson not available, new chair needed. Christy will help and mentor. State has changed competition rules. Only J. S. Bach for competition!

#### COMPOSITION - Eularee Smith

Workshop Jan 11 at Upstart Crow Studios. \$10 fee. To help with composition recital. Great interest in other districts. Purpose is to get students started. Rotating system for both beginning and intermediate students. Teachers welcome. Two mentors for kids to call (and teachers too).

#### MUSIC LINK

Scholarship program for piano students (Eularee Smith). Teacher selects students in financial need. Nominate student. As many students as you want. Teacher designates and provides scholarship amount. Festival fees paid and books paid by State (reimbursed).

#### LIBRARIAN - Marti Csonka

Books and DVDs available. Year Book has list of materials. Contact Marti to check out items, rather than having her bring everything to each meeting.

#### Meeting called to close at 10:40.

A panel presentation on teaching ideas, techniques and resources followed. Presenters were Linda Plant, Christine Mirabella, and Neil Patton.

ADDENDUM: Sandy Hull has agreed to chair the Bach Festival. She will be assisted by Bethany Foster.

#### Neil Patton

Recording Secretary

#### Corrections...

Please update the 2008-2009 Membership Directory with the following information:

Kobato Sweet  
phone: 505-9977

Address change: Mary Elma Shotts  
2235 Turnberry Court  
Eugene, OR 97401

*Over the years, I have collected spontaneous utterances from my young piano students. Sometimes witty, often completely unexpected, and occasionally exasperating, my students have never failed to keep me well entertained. Here are a few of my favorites:*

— “We went to Wisconsin to visit grandparents and I left all my music in Sheboygan.” (Sight-reading for the next two weeks.)

— “Can you teach me something for my school’s talent show? It’s tomorrow.” (At least he let me know about it in advance.)

— “When I grow up I want to be a piano teacher like you and take over your students when you’re dead. Just how old are you, anyway?” (Felt ancient for the rest of the day.)

— “If Bach is so famous, how come he never comes to his Festival?” (Maybe he IS there in spirit.)

— “Do you just teach piano or do you have a real job?”  
(I do undercover work for the CIA in my spare time.)

— “Can I learn some music by *Metallica*?”  
(How about Barry Manilow?)

— “My friend’s piano teacher is a lady...how come you’re a ‘man’ teacher?”  
(There are some things I am not about to change.)

— “Mom said I’m probably still contagious so she kept me home from school today.”  
(But you still came to your piano lesson—how thoughtful.)

*Contributed by Wyatt Burger*

### University of Oregon School of Music and Dance *Spotlight On Keyboard Concerts!*

Wednesday, Oct. 22, 8 PM, Beall Hall  
**PIANO MUSIC OF FRANZ LISZT**  
*Faculty and Students; \$7, \$5*  
Featuring Alexandre Dossin and UO piano students.

Sunday, Nov. 9, 3 PM, Beall Hall  
**JEFFREY KAHANE, Piano**  
*Chamber Music @ Beall; \$33, \$29, \$25, \$16*  
Music by Mendelssohn, Schubert, Frazelle, and Rachmaninoff.  
Tickets from the hult Center (682-5000) or EMU (346-4363).  
Pre-concert lecture, 2 p.m.

Monday, Nov. 17, 8 PM, Beall Hall  
**GABRIEL CHODOS, Piano**  
*Guest Artist Recital; \$10, \$8*  
Music by Schubert, Beethoven, and Jon Appleton.  
Free master class at Noon on Nov. 18.

## President's Message

Dear Members,

As Jim and I were driving home after **Dean Kramer's** marvelous Beethoven Sonata's recital Thursday evening we were reflecting on the many outstanding musical programs we've heard in the past few months. Marvelous music!

It is exciting to realize that members of our own organization have been a vibrant and active part of these musical opportunities. And how nice to know there is more to come! It is with great pride that we say thank you for the enrichment that so many of you offer to our community.

Many of us reveled in **Alexandre Dossin's** performances of Prokofiev's Piano Concerto No. 3 in C Major, Op. 26 during the Symphony Conductor search in September—truly exhilarating performances! Our district recording secretary, **Neil Patton** has given one recital at the First Baptist Church and has another coming up at the United Lutheran Church on October 7. We are proud of Neil who was trained right here in our district by our late fellow member, **Dorothy Munz**.

**Victor Steinhardt** will be performing at Beall Hall, February 3, 2009. We've teased Victor about being our "stage hand" during the years he held the district position of U of O liaison. Year after year he carefully prepared room 198 for our recitals. **Geneviève Mason** and **Betsy Parker** gave stellar piano duet performances in Eugene before sharing their talents in France this summer. **Marti Csonka** and **Sandy Hull**, another piano duet team, were a part of the concert series at the United Methodist church in April.

**Sharron Smith & Christine Mirabella**, along with the husbands of Christine, **Sarah Burch** and **Crystal Zimmerman** enrich the sound of our Eugene Symphony. **Ellen McQuilkin's** husband provides us with researched insight in the Symphony program notes. **Ginevra Ralph** and her husband provide a variety of stunning musical opportunities at the Shedd. One of their recent musical shows was the Wizard of Oz in which **Sandy Hull** was principal pianist.

All of the above mentioned members are a credit to our organization and an asset to the Emerald Empire. Being a part of our Eugene District OMTA offers us many opportunities to rub shoulders with the finest musicians in our area.

Each one of you in your chosen field is impacting the lives of others in a positive way. I think of those of you who are the accompanists, private music teachers, school music teachers, church musicians, ensemble players, educators, lecturers, philanthropists and listeners. You are all deeply appreciated.

No matter what happens around us we have the ability to enjoy life through musical eyes, ears, and thoughts. Remember, each day, to give thanks for the gift of music and continue to share it abundantly in your world.

Yours in the joy of music,

*Carolyn McHan*

### Excellent books for students:

#### Gershwin's Rhapsody in Blue

by Anna Harwell Celenza; Illustrated by JoAnn E. Kitchel  
Charlesbridge Publishing

It's 1924 and George Gershwin has just read an announcement in the newspaper saying that he's performing a new concerto in Aeolian Hall in a few weeks. The only problem is, this is news to him!

Anna Harwell Celenza and JoAnn Kitchel infuse the story behind the creation of the *Rhapsody in Blue* with the spirit of the roaring twenties—a time when Tin Pan Alley was

exploding with musical talent.

Written at a reading level appropriate for 3rd grade and above, this book also comes with a CD recording of *Rhapsody in Blue* performed by the composer from a 1925 piano roll, and the Columbia Jazz Band, conducted by Michael Tilson Thomas.

Additional books in this series include:

*The Farewell Symphony*  
*Pictures at an Exhibition*  
*The Heroic Symphony*  
*Bach's Goldberg Variations*

**Con Brio** *Newsletter of the*

**OREGON MUSIC TEACHERS ASSOCIATION - Eugene District**

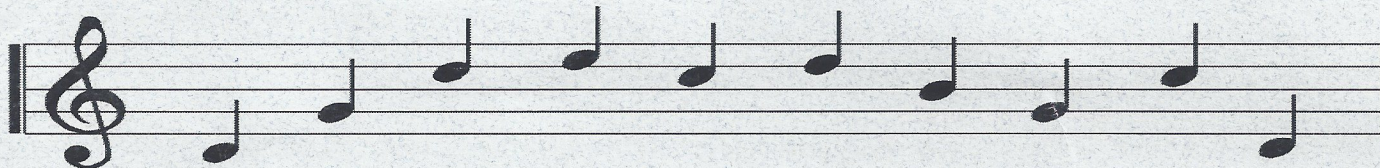
Wyatt L. Burger, Editor

P. O. Box 307

Cheshire, OR 97419-0307

PLACE  
STAMP  
HERE

PLACE  
ADDRESS LABEL  
HERE



**District Telephone Number**

for teacher referrals: 242-1024

Visit the OMTA website at

[www.oregonmta.org](http://www.oregonmta.org)

where you will find

*Music News* online

Forms for OMTA Syllabus and festivals

Directory of Oregon districts

Calendar of events

The deadline for submitting  
materials for the November 2008

issue of *Con Brio* is

Saturday, November 1, 2008.

Send to [westlanepiano@cvcable.com](mailto:westlanepiano@cvcable.com)

Visit our website at [www.oma-eugene.org](http://www.oma-eugene.org)

***November Meeting***

**Monday, November 10, 2008**

*Teaching Students with Different Learning Styles*

Linda Spangler



Place: Home of Linda Spangler,

2441 Emerald Street

Eugene